

**SECURING
OUR FUTURE**
ECONOMIC
MOBILITY SUMMIT
Building pathways for upward mobility



WELCOME

About the Palm Beach TPA

Metropolitan Planning Organization (MPO)

 Plan & Prioritize Federal & State Transportation Funds

 Three Advisory Committees: Technical, Citizens, and Vision Zero

 Governing Board of 21 Local elected officials

 16 staff



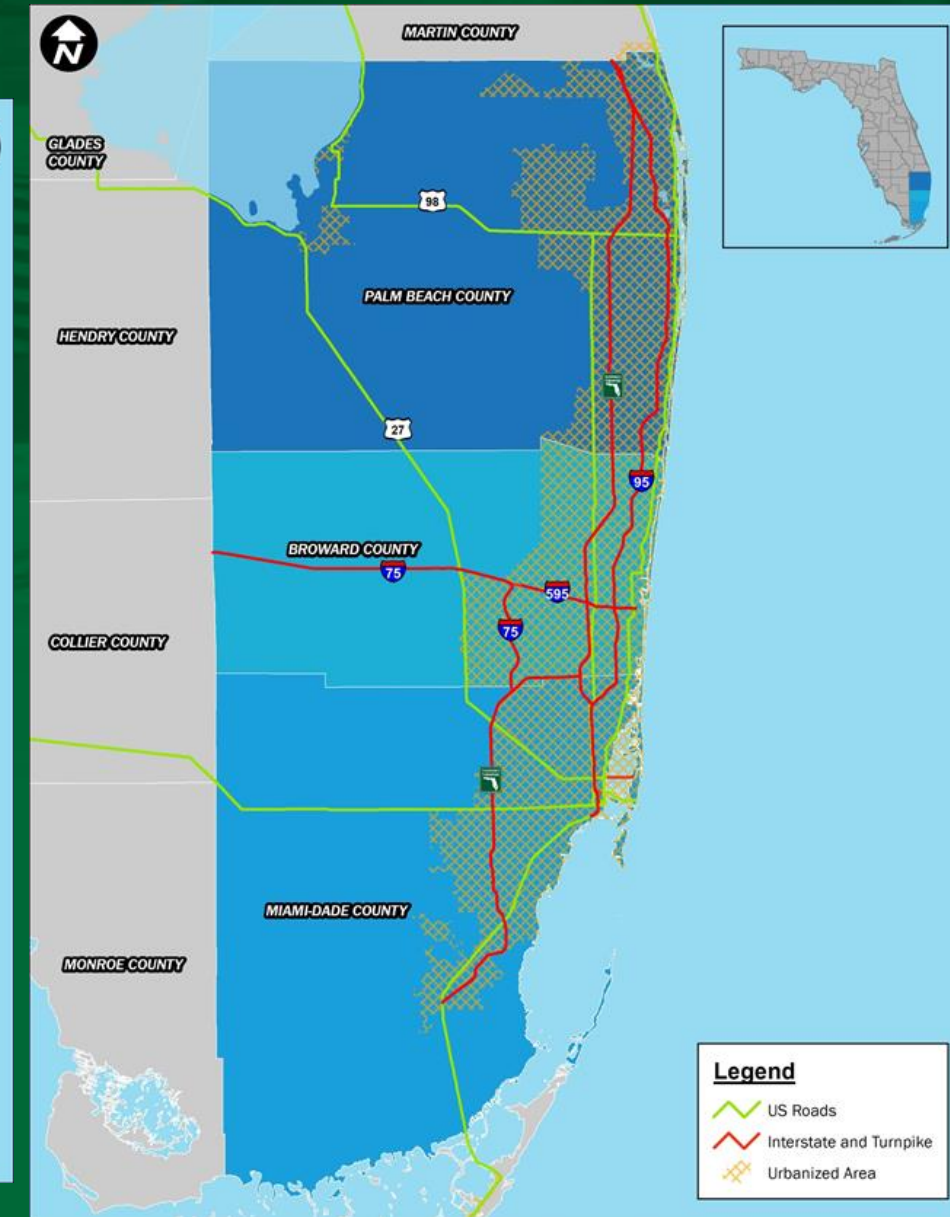
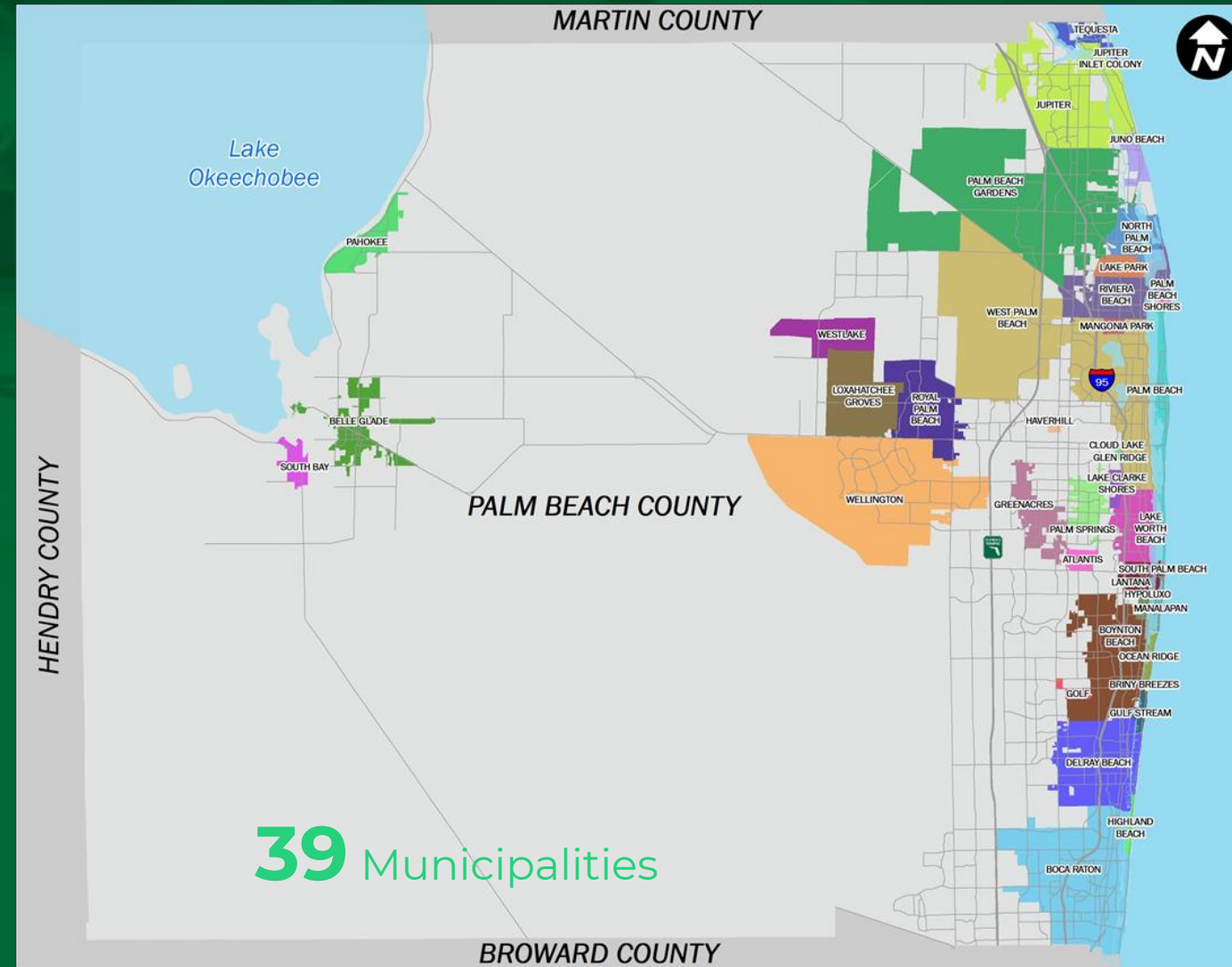
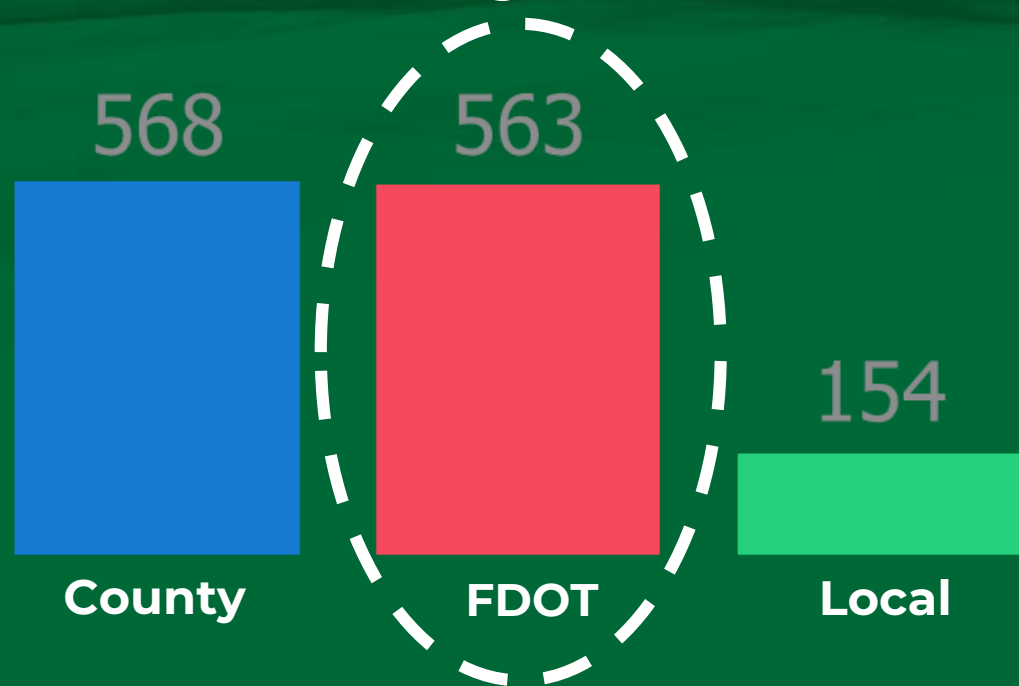
Vision: A safe, efficient, connected multimodal transportation system

SECURING OUR FUTURE
ECONOMIC MOBILITY SUMMIT
Building pathways for upward mobility



Transportation Planning Area

Roadway Miles



SECURING OUR FUTURE
ECONOMIC MOBILITY SUMMIT
Building pathways for upward mobility

Mobility Options



Local Circulators



- Boca Raton
- Boynton Beach
- Lake Worth Beach
- Palm Beach Gardens
- Palm Beach Island
- West Palm Beach



- Delray Beach
- Wellington

Visit [Freebee's website](#)



- West Palm Beach

Visit [Rose Trolley's website](#)



PalmBeachTPA.org/Mobility



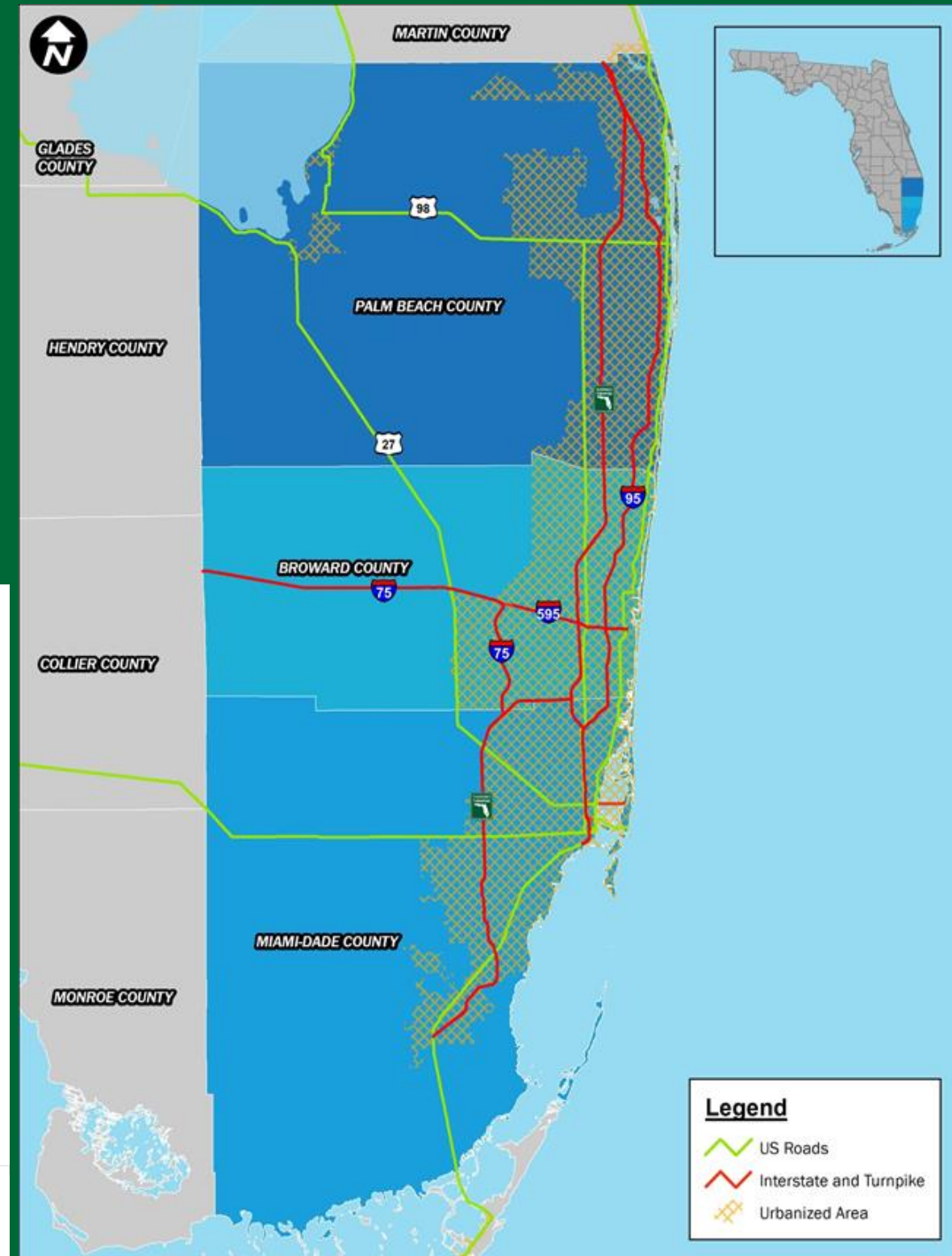
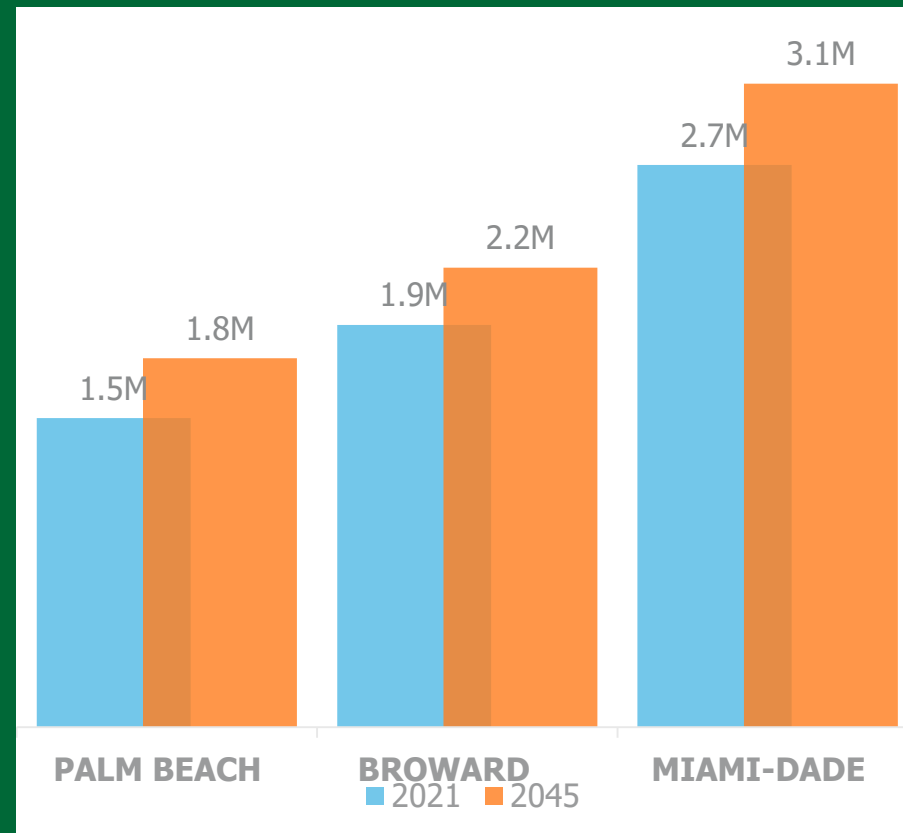
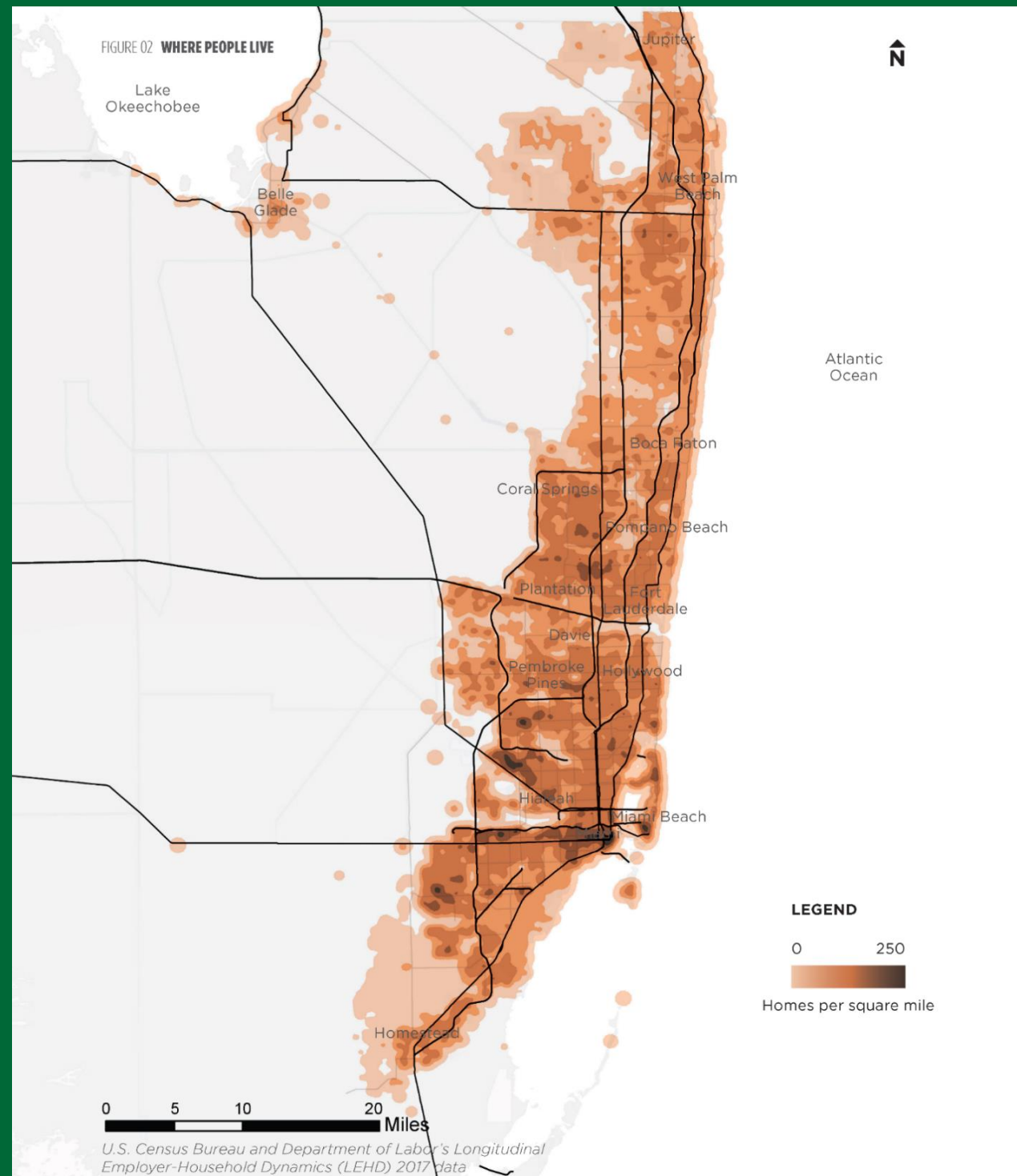
SECURING OUR FUTURE
ECONOMIC MOBILITY SUMMIT
Building pathways for upward mobility



Mobility Options



Our Region



Housing Affordability

Palm Beach
County

37%



Florida
Average

31%

no more than 30% considered affordable

23%



24%

no more than 15% considered affordable

Why Transportation and Affordable Housing Are Inextricably Tied



Why Transportation and Affordable Housing Are Inextricably Tied

By Jerome Ryans, President & CEO Tampa Housing Authority

Historically, affordable housing has meant exactly that - creating living spaces that enable residents to pay no more than 30 percent of their monthly budget on housing. At first glance, this sounds reasonable. After all, if your goal is to provide people with an affordable place to live, it makes sense to focus on the price of housing, right?

But if your actual goal is to make living affordable, it turns out that you have to take a step back and think about what "an affordable place to live" really means. Is it simply the living space itself - the housing unit that people return to each evening? What about other necessities that people require to live and thrive?

**SECURING
OUR FUTURE**
ECONOMIC
MOBILITY SUMMIT
Building pathways for upward mobility

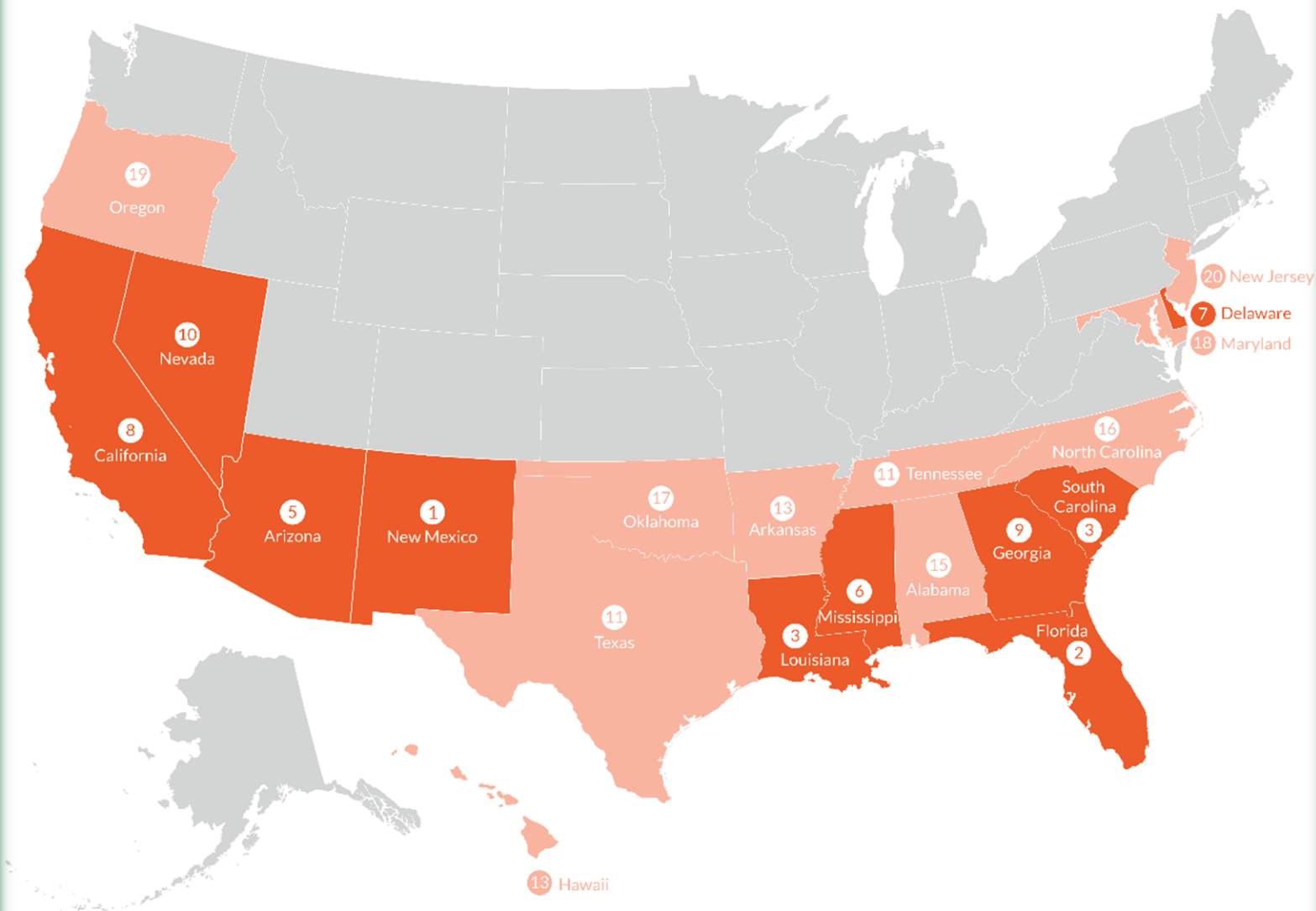


Transportation Safety

Florida ranked #2 most dangerous state for pedestrians

The top 20 most deadly states for people walking

By number of deaths per 100,000 people, 2018-2022



Source: National Highway Traffic Safety Administration. (2024). Fatality Analysis Reporting System.

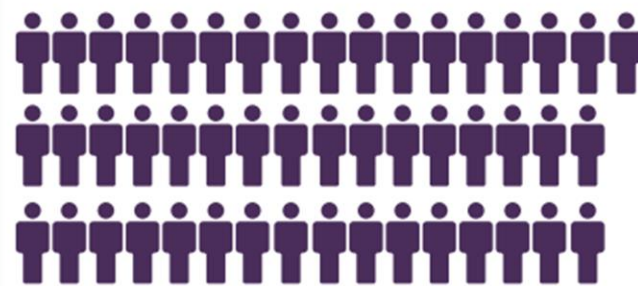


ON FLORIDA'S ROADS...



8

daily fatalities



49

daily serious injuries

...even one life lost is too many

Source: FDOT

SECURING OUR FUTURE
ECONOMIC MOBILITY SUMMIT
Building pathways for upward mobility



Complete Streets

BENEFITS OF COMPLETE STREETS

People who live in neighborhoods with sidewalks on roads are 47% more likely to be active at least 30 minutes per day.
American Journal of Preventive Medicine, 2009

Increased physical activity promotes better grades, school attendance, and classroom behavior.
National Center for Chronic Disease Prevention and Health Promotion, 2014

Pedestrian street activity increases support of local businesses, expands employment opportunities, and promotes reinvestment into the local economy.
New York City Department of Transportation, 2013

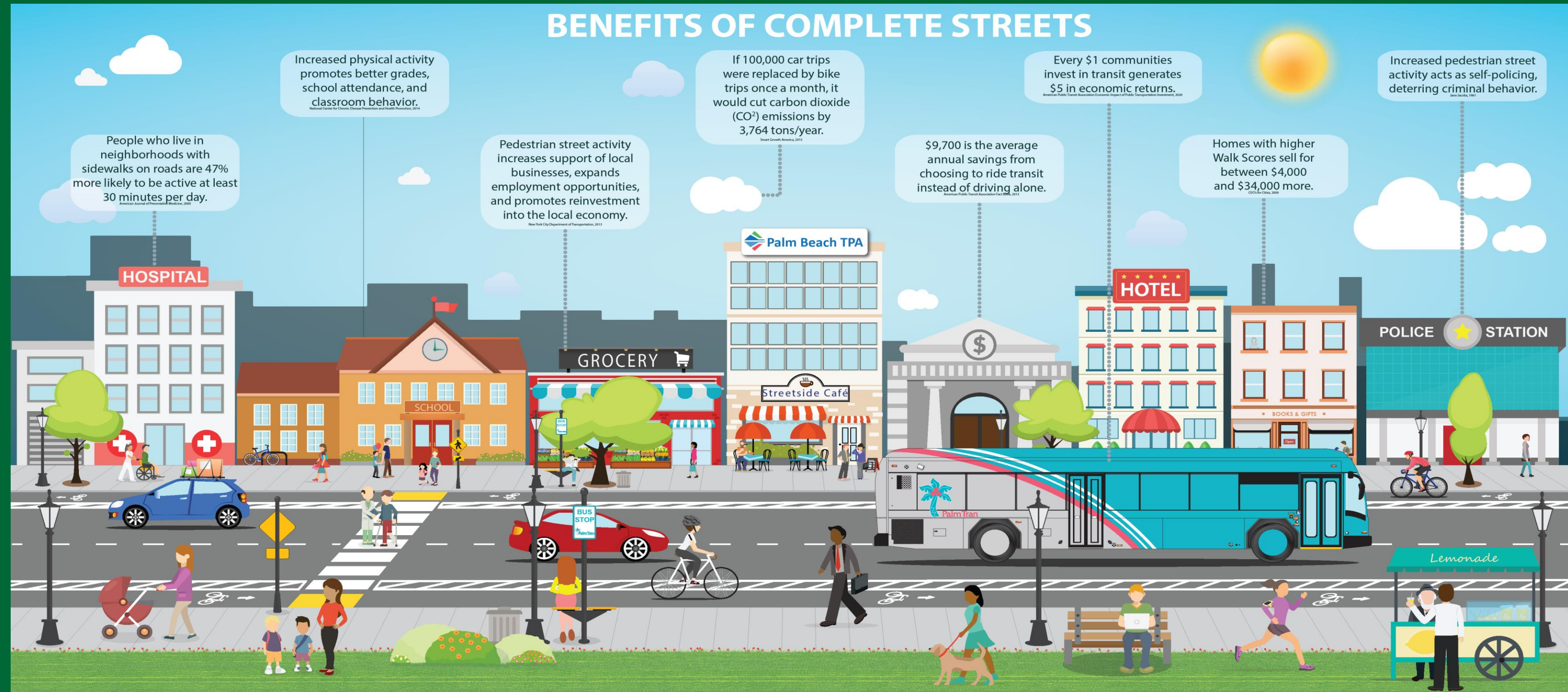
If 100,000 car trips were replaced by bike trips once a month, it would cut carbon dioxide (CO₂) emissions by 3,764 tons/year.
Smart Growth America, 2015

\$9,700 is the average annual savings from choosing to ride transit instead of driving alone.
American Public Transit Association Economic Impact of Public Transportation Investment, 2020

Every \$1 communities invest in transit generates \$5 in economic returns.
American Public Transit Association Economic Impact of Public Transportation Investment, 2020

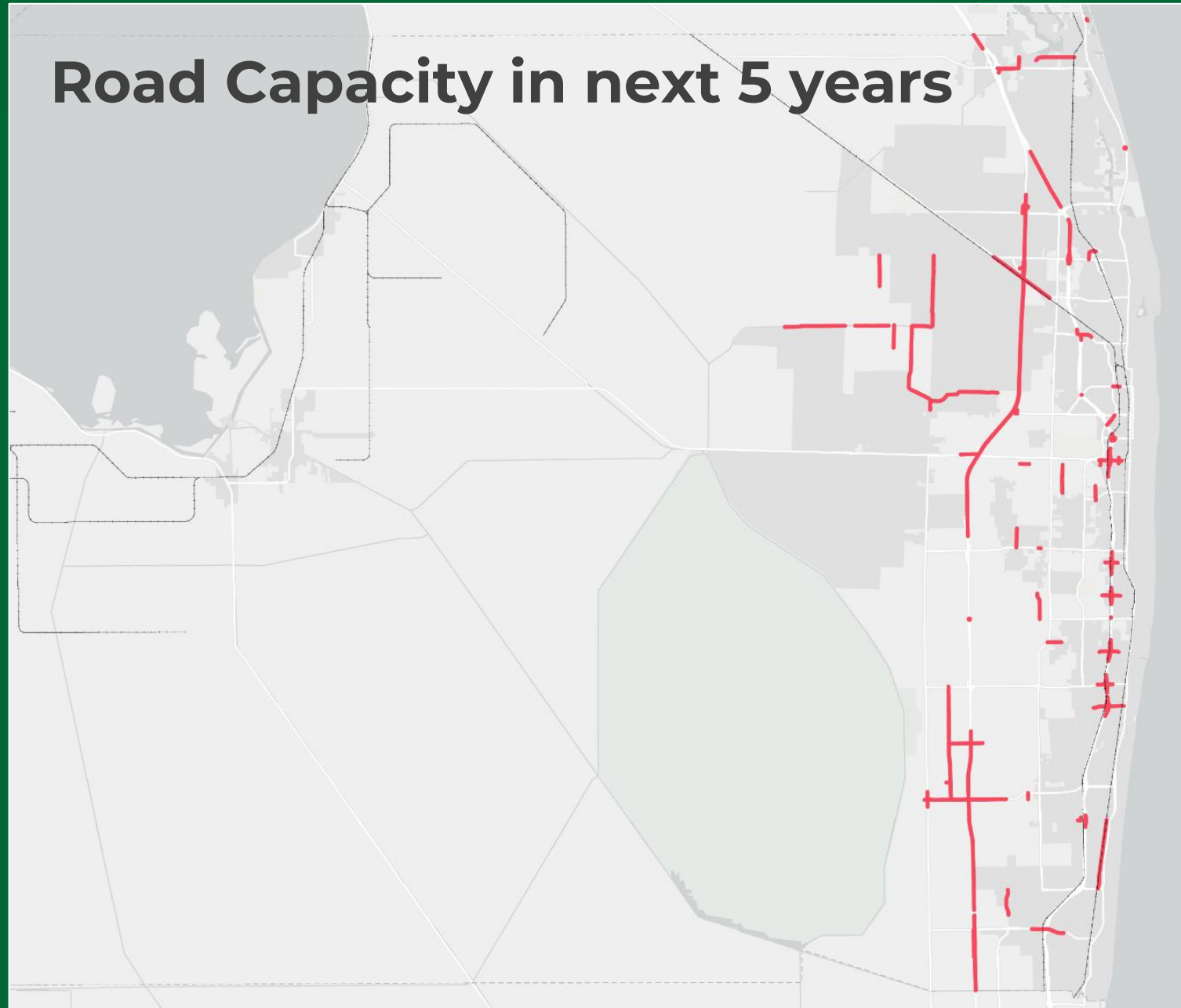
Homes with higher Walk Scores sell for between \$4,000 and \$34,000 more.
GIS.com, 2009

Increased pedestrian street activity acts as self-policing, deterring criminal behavior.
Janis Jacobs, 1981



Today...

Road Capacity in next 5 years



Okeechobee Blvd. today



Built-out roadway network

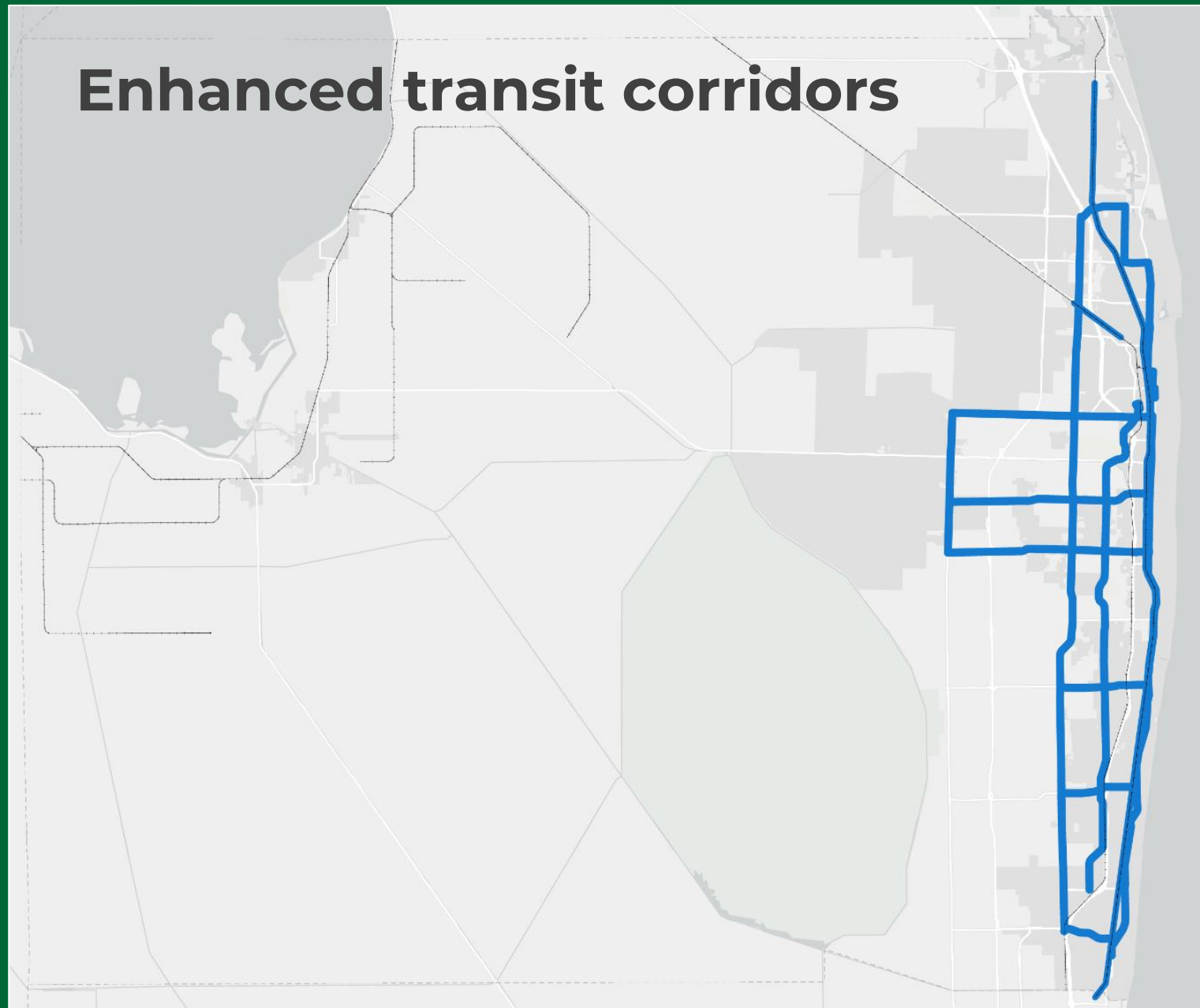
Prioritizes vehicle speed

\$1.7 Billion in roadway capacity for next 5 years

- 977 lives lost in the past 5 years
- Growing congestion

Future...

Enhanced transit corridors



Okeechobee Blvd. in 2035? 2050?



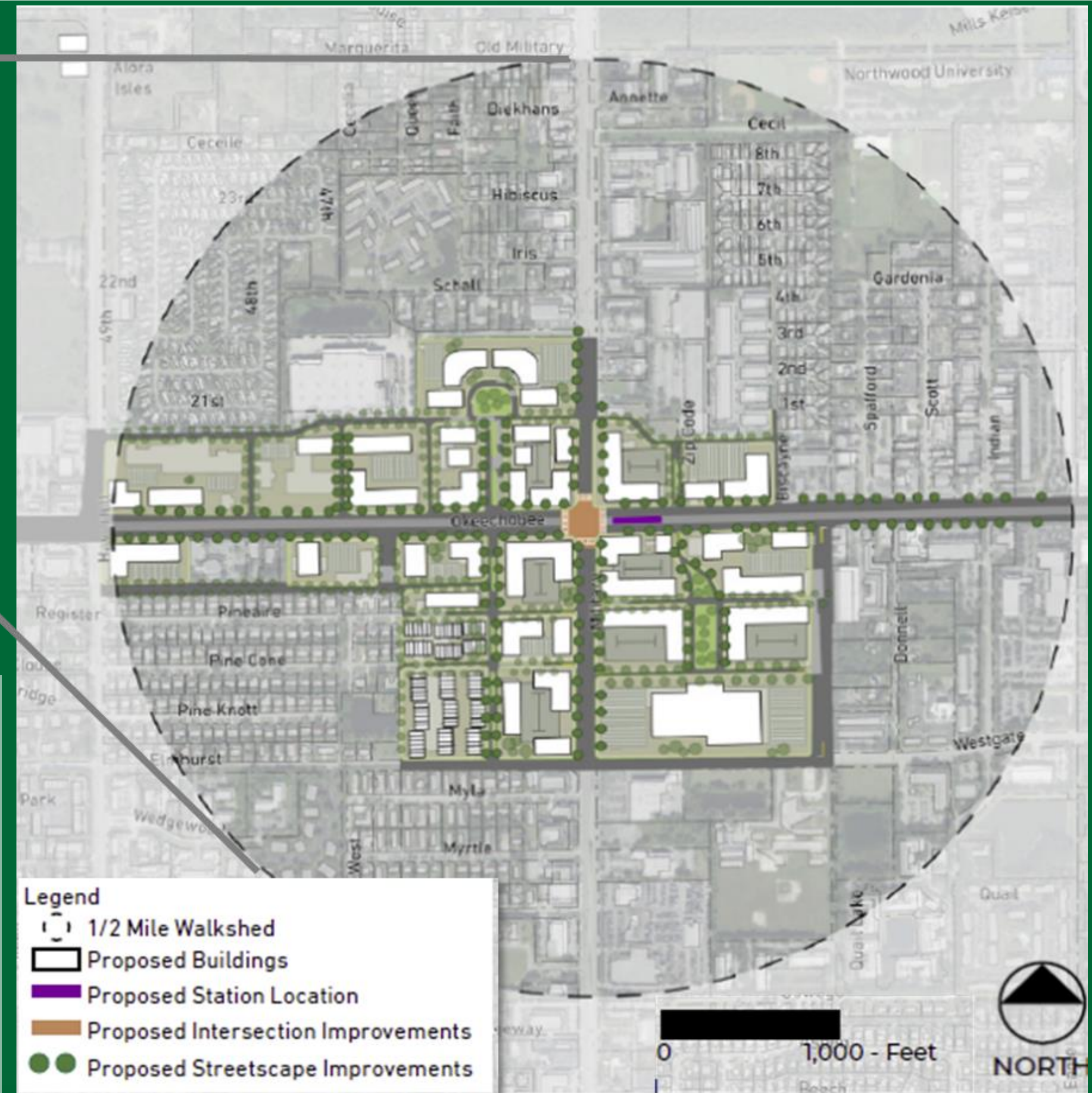
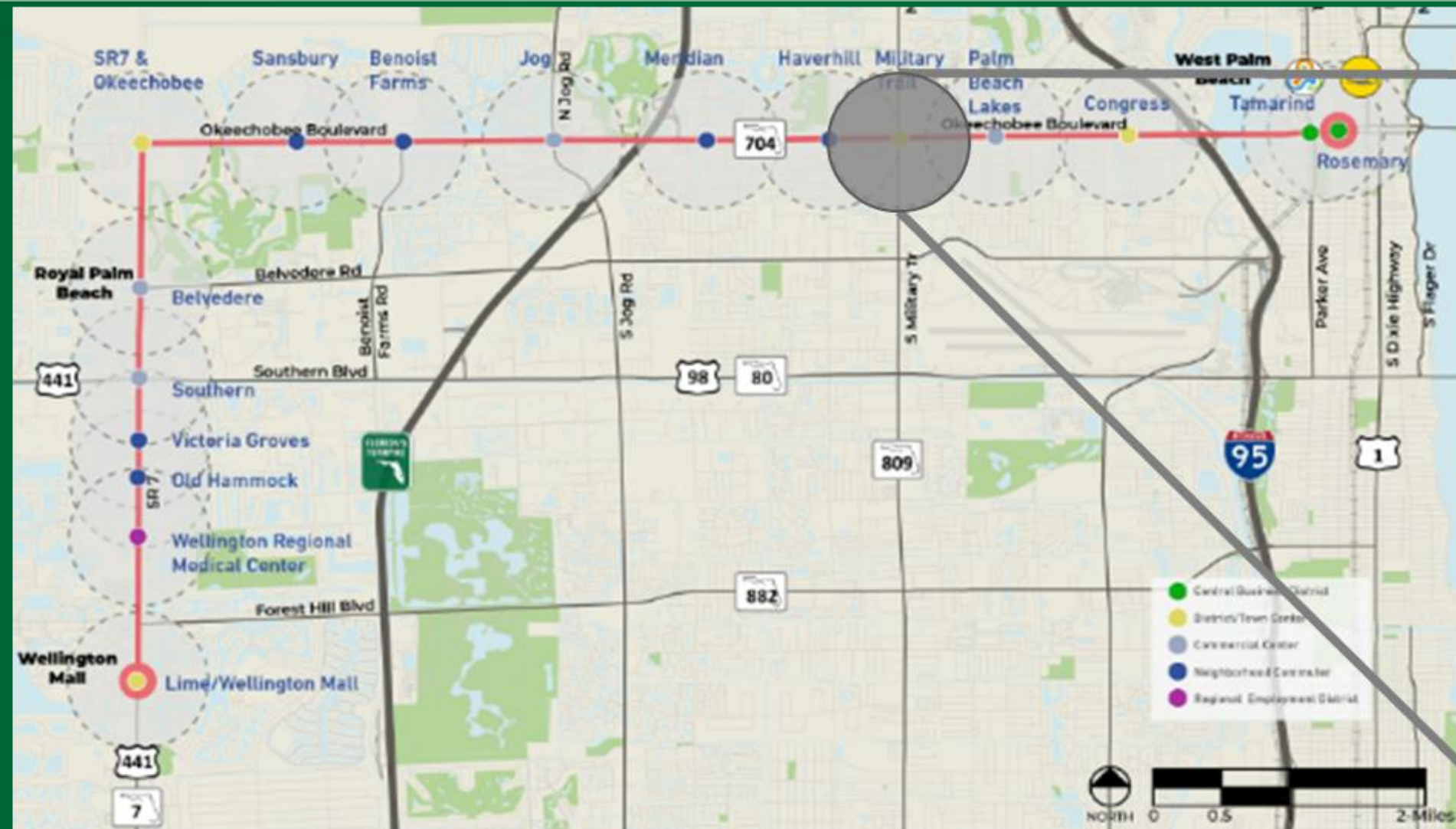
Invest in moving people/goods differently
Prioritize safety & convenience for everyone

- Transportation & land use connection
- Tradeoffs

**SECURING
OUR FUTURE**
ECONOMIC
MOBILITY SUMMIT
Building pathways for upward mobility



Station Area Planning – Military Trail



<p>1,100 Potential New Homes</p> <p>76 New Affordable Units <i>(based on AMI assumptions)</i></p>		<p>13,200 Potential New Jobs</p> <p>\$647 million Additional ad valorem</p>	
---	--	---	------

Military Trail Station Area



**SECURING
OUR FUTURE**
ECONOMIC
MOBILITY SUMMIT
Building pathways for upward mobility



Military Trail Station Area



Regional Transportation Vision

**One Connected
Region**

Palm Beach – 561 Plan

Broward – Vision 2100

Miami-Dade – SMART Plan



**SECURING
OUR FUTURE**
ECONOMIC
MOBILITY SUMMIT
Building pathways for upward mobility



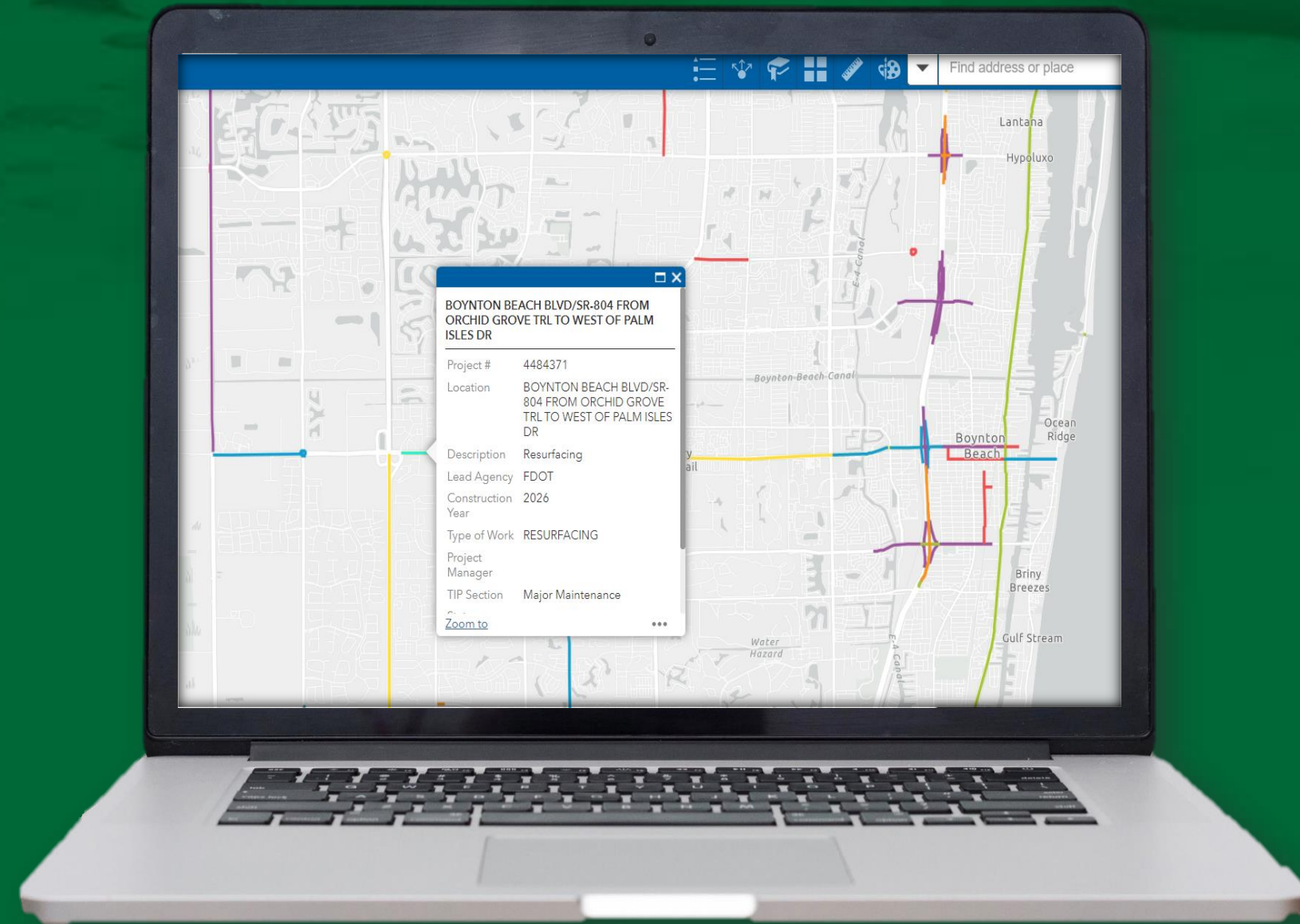
Learn More

Mobility Options

[Palm Beach TPA.org/Mobility](https://PalmBeachTPA.org/Mobility)

Resources

PalmBeachTPA.org/Resources



**SECURING
OUR FUTURE**
ECONOMIC
MOBILITY SUMMIT
Building pathways for upward mobility



2025 Safe Streets Summit



MIAMI-DADE - BROWARD - PALM BEACH

REGISTER NOW
FEBRUARY 6 -7, 2025

#SafeStreetsSummit
SafeStreetsSummit.org



**SECURING
OUR FUTURE**
ECONOMIC
MOBILITY SUMMIT
Building pathways for upward mobility



THANK YOU

Valerie Neilson

Executive Director

Palm Beach TPA

VNeilson@PalmBeachTPA.org

**SECURING
OUR FUTURE**
ECONOMIC
MOBILITY SUMMIT
Building pathways for upward mobility





Public Transit

Ivan Maldonado, ND

Executive Director

Palm Tran



We provide access to opportunity for everyone safely, efficiently and courteously.

Services



150 Vehicles - \$2.00 fare



300 Vehicles - \$3.50 fare



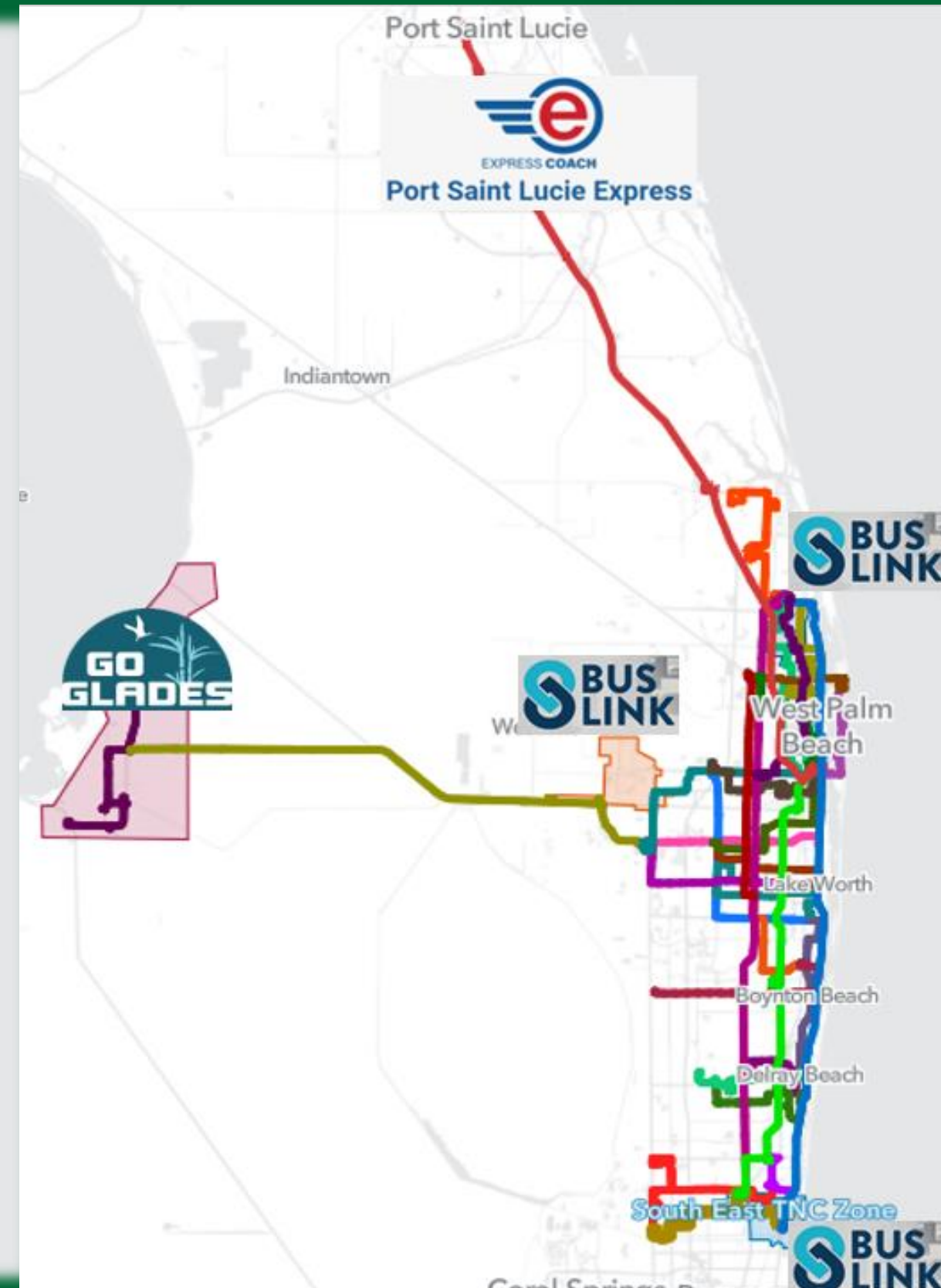
10 Vehicles - \$2.00 fare



3 Vehicles - \$3.00 fare



Voucher - \$8.00



Numbers at A Glance

By land area, Palm Beach is the largest county in Florida and 9th largest county east of the Mississippi River.

More than 1.5 million residents call Palm Beach County home, making it the 3rd most populous county in the state.



Educational Trips
77,250 -- K-12 Trips
164,890 -- College Trips

**SECURING
OUR FUTURE**
ECONOMIC
MOBILITY SUMMIT
Building pathways for upward mobility



Apps & Trip Planning



Palm Tran App
Total Downloads: 68,900



Paradise Pass App
Total Downloads: 30,000+



Connection App
Total Downloads: 1,000+



Go Glades App
Total Downloads: 3,600+

Palm Tran
Public Transportation

Full Screen Feedback Bookmark

CURRENT TIME 05:34 PM

Routes

Number	Name
1	PBG - BCR via US-1
2	WPB - BCR via CONGRESS
3	PBG - BCR via MILITARY
4	WPB - GRN via HAVERHILL
10	N COUNTY X-TOWN via MILITARY
20	PBG - WPB VIA CONGRESS
30	RVB X-TOWN via BLUE HERON
31	WPB X-TOWN via 45TH
33	PBG - WPB via AUSTRALN/PBL
40	WPB - BLG via SR-80 [Ltd Stop Svc]
41	WPB - PALM BCH INLET
43	WPB X-TOWN via OKEECHOBEE
44	WPB X-TOWN via BELVEDERE
46	WPB - WLN via FOREST

Map Satellite

Map view showing a route through Palm Beach area with various landmarks like Walmart Supercenter, Publix Super Market, and HCA Florida JFK North Hospital.





THANK YOU!

Contact us at:
Palmtran.org
(561) 841-4287

